


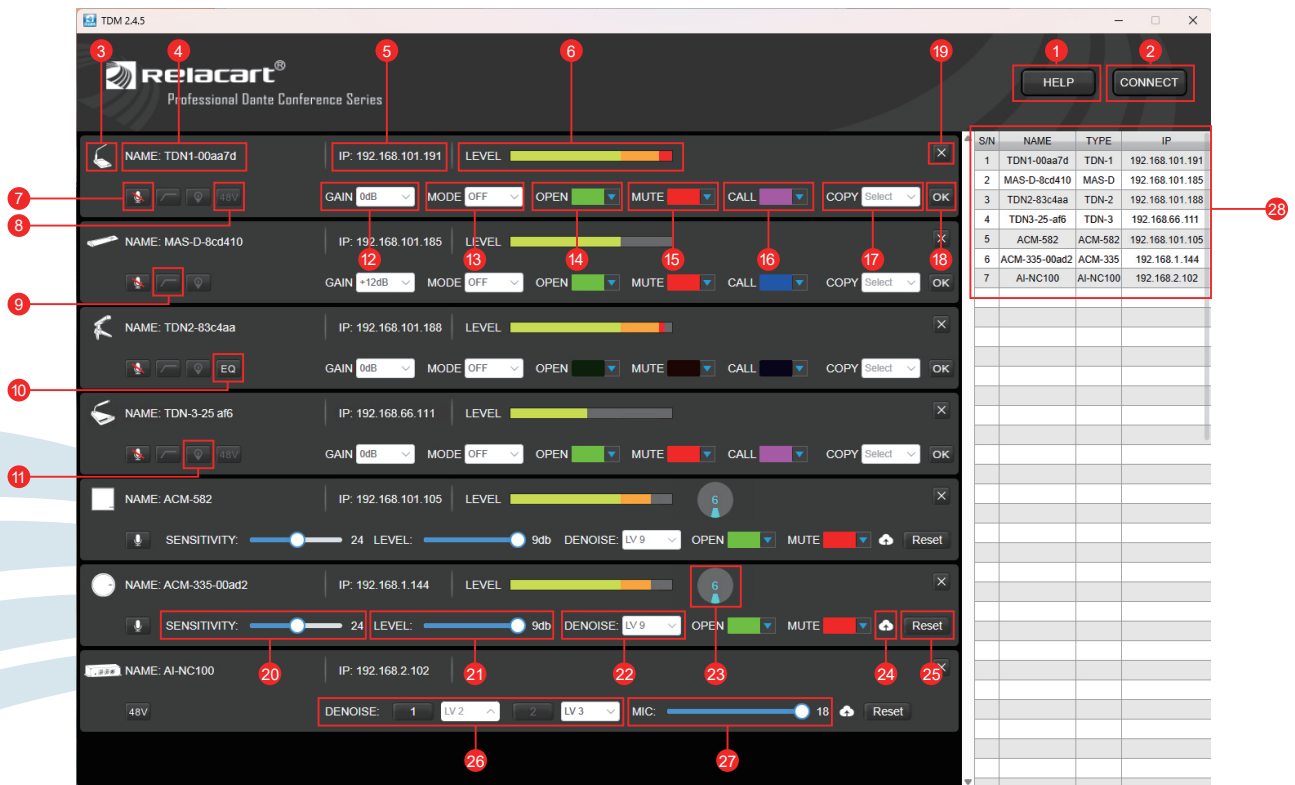
TDM Software Application Guide

01、 Connection modes

1. Double-click the  software icon to open the software.
2. Click on the **CONNECT** key at the top right of the software interface to connect.

02、 Functional specifications

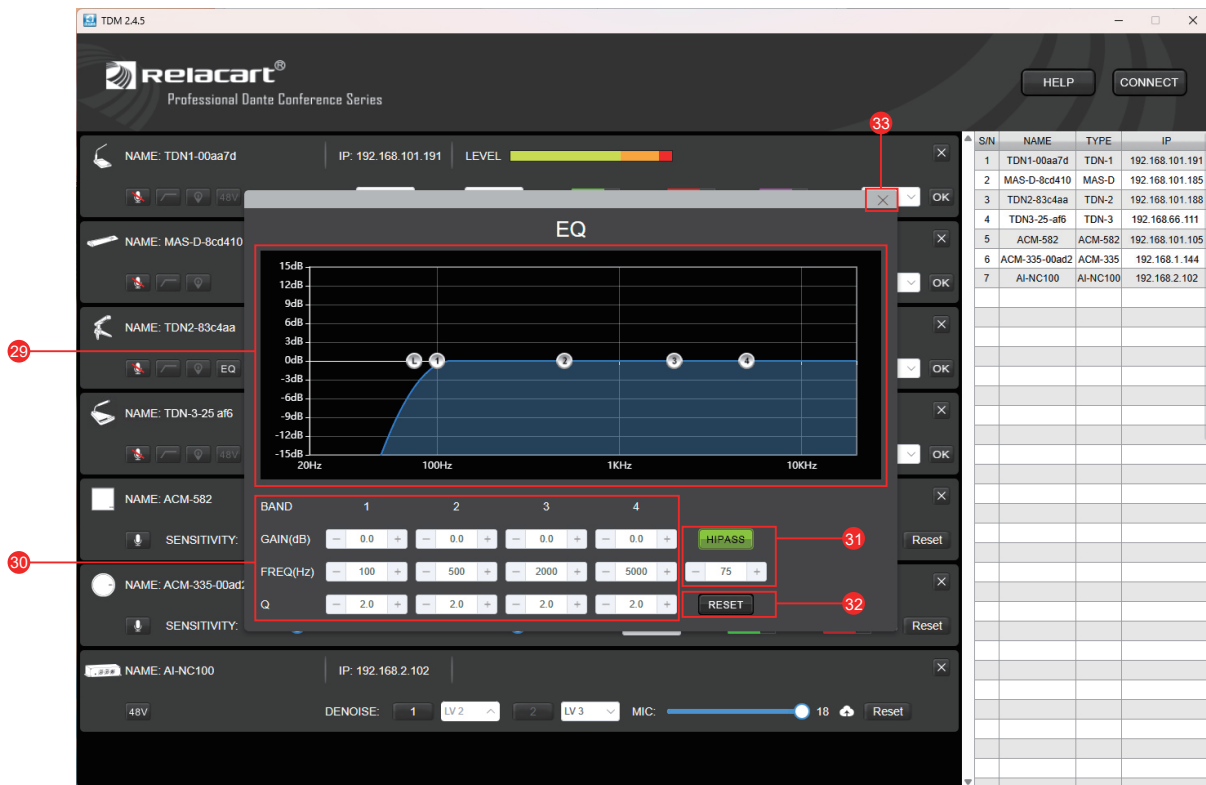
1. Main interface



- 1: Help button
Click to open the software Application guide in PDF format.
- 2: Connect button
Click the button to automatically search for all microphones in the same network segment in the LAN, and display the microphones found in the device list, and automatically open the function page on the left.
- 3: Microphone outline
Display the outline of the currently connected microphone.
- 4: Microphone name
Displays the name of the currently connected microphone. The model name can be edited through the edit switch.
- 5: IP address
Displays the IP address of the currently connected microphone.
- 6: Microphone level indication
Displays the current microphone input level value.
- 7: Microphone mute switch
Icon with a red slash means the microphone is muted, without a red slash it means the microphone is on.
- 8: Microphone 48V phantom power switch
The gray icon indicates that the phantom power is off; The green icon indicates that the phantom power is turned on.
(Note: This function is only displayed in the microphone window with phantom power switch)

- 9: Microphone low cut switch
A gray icon indicates that the low-cut function is off; a white icon indicates that the low-cut function is on. Low frequency noise in the environment picked up by the microphone can be filtered.
- 10: EQ page button
Click the icon to pop up the EQ interface. A gray icon indicates that the EQ function is turned off; a white icon indicates that the EQ function is turned on.
(Note: This function is only displayed in the microphone window with EQ function)
- 11: Microphone positioning switch
A gray icon indicates that the positioning function is turned off; a white icon indicates that the positioning function is turned on.
The corresponding microphone LED light will flash, you can quickly locate the current microphone position during debugging. When the microphone finishes flashing, the icon will return to gray.
- 12: Microphone gain
Click the drop-down menu to set the microphone gain. There are 6 levels to choose from (+15dB/+12dB/+9dB/+6dB/+3dB/0dB) 。
- 13: Mode setting
Click the drop-down menu to set the microphone mode. There are 4 modes (ON/OFF/PTT/PTM) 。
- 14: Microphone open state LED color setting
Click the drop-down menu, you can set the microphone open state LED color.
- 15: Microphone mute status LED color setting
Click the drop-down menu, you can set the microphone mute state LED color.
- 16: Microphone call status LED color setting
Click the drop-down menu, you can set the microphone call state LED color.
- 17: Microphone function replication
Click the drop-down menu to select the microphone with set functions, and then click OK to copy the set microphone functions to the current microphone.
(Note: Only the same model of microphone can be copied)
- 18: OK button: microphone copy function
After clicking, will pop up a window , prompting whether to copy the selected microphone parameters.
- 19: Close button of microphone function window
Click the Close button to close the microphone page that does not need to be displayed. If you want to reopen it, double-click the microphone name in the right list to reopen it.
- 20: Sensitivity setting
Driving the fader adjusts the microphone's sensitivity. Higher sensitivity results in a wider pickup range, while lower sensitivity narrows the pickup range.
- 21: Level main volume
Push the fader to adjust the device's main volume level of the microphone. If the sound is low, the gain can be increased; If the sound is larger, the gain is attenuated.
- 22: Noise reduction level setting
LV0 indicates the lowest noise reduction level, and LV9 indicates the highest noise reduction level.
- 23: Microphone orientation diagram
Equipped with up to twelve highly directional sound pickup lobes.
- 24: Firmware upgrade
Click to firmware upgrade.
- 25: Microphone recovery
Click the RESET button to restore the microphone parameters to the factory settings.
- 26: Noise reduction level setting
The device's panel noise reduction settings 1 and 2 correspond to the software's noise reduction settings 1 and 2. When noise reduction level 1 is selected on the panel (LED lights up red), the software button 1 will display white text; otherwise, it will be gray. LV0 indicates the noise reduction function is turned off, and LV5 indicates the highest noise reduction level. The corresponding noise reduction level can be selected from the drop-down menu, and users can easily switch between preset noise reduction levels on the panel.
- 27: Digital gain
Driving the fader adjusts the built-in digital gain. Higher gain results in higher sensitivity and more responsive noise reduction.
- 28: Microphones list
Displays the number of microphones found, name model, and IP address. Double-click the selected microphone to open the function page on the left.

2. EQ interface



29: EQ adjustment window

You can drag any EQ frequency point in the EQ function window to achieve the appropriate effect. A total of 4 frequency points can be set.

30: EQ frequency setting

Corresponding to the four frequency of EQ adjustment window, the parameters of frequency can also be fine-tuned with faders.

GAIN: Frequency gain adjustment.

FREQ: Frequency adjustment.

Q: Frequency Q value adjustment.

31: HIPASS button

High-pass filter, when the HIPASS function is turned on, the frequency of the high-pass filter can be adjusted on the EQ page to adapt to the application of various live environments.

32: RESET button

Click the RESET button to restore EQ parameters to factory Settings.

33: EQ page close button

After adjusting the EQ parameters, click the close button to close the EQ interface.

(There is no need to save the parameters separately, the microphone automatically saves the parameters every time you operate a step.)

* Note: The functions of different microphone devices are not the same. Please refer to the corresponding descriptions in this manual for the corresponding functions.

Relacart Electronics Co., LTD.

No. 10 Fuxing Road, Enping City,
Guangdong, China-529400

Tel: +86-750-7181211

Fax: +86-750-7181212

Http://www.relacart.com

